

*ABOUT YOUR ALARM
SYSTEM
(page 2)*

*ARMING / DISARMING +
PARTITIONING
(page 3-5)*

*GROUP ARMING /
DISARMING
(page 6-8)*

*FORCE ARMING
(page 9)*

*ABORTING ALARMS
(page 9)*

*ZONE SCANNING
(page 10)*

*TROUBLE SCANNING
(page 10)*

*ZONE BYPASSING
(page 11)*

*SENSOR RESET
(page 11)*

*HISTORY VIEWING
(page 12-14)*

*VIEW PARTITION STATUS
(page 14)*

*MONITOR MODE
(page 15)*

*WALK TEST
(page 15)*

*SYSTEM PROGRAMMING:
(page 16)*

PINs (page 17)

Time / Date (page 18)

Schedules (pages 18 - 20)

Extend Close Time (page 21)

Duress PIN (page 21)

Auto Monitor (page 22)

Holiday Schedules (page 22)

SYSTEM CHARTS:

*Description of Displays
(pages 23 - 25)*

PIN Levels (page 17)

UL Information (pages 26 - 27)

HAMILTON SAFETY

OWNER'S MANUAL

*SMDC-16 HS ALARM SYSTEM
AND
SMPC-32 HS ARMING STATIONS*

About Your Alarm System

General Information

Congratulations on the purchase of your new alarm system. The Hamilton Safe SMDC is an ongoing project in advance engineering technology from Hamilton Safe that incorporates many new and innovative features into your new alarm system. Your new alarm system has survived rigorous testing at both the FCC and Underwriters Laboratories and has obtained the highest possible UL ratings for commercial burglary and fire systems. Please take a few moments to review this manual and familiarize yourself with your new alarm system.

Description of Your Alarm system

- The HAMILTON SAFE SMDC alarm system is a sixteen zone (16) alarm system that has the capabilities to be expanded to a maximum of eighty (80) zones in eight zone increments.
 - The panel will support a maximum of eight (8) arming stations which are used to enter commands that will be processed by your alarm system.
 - Be sure to question your installation company as to the total number of zones they have installed and the placement of the arming stations.
-

Description of Arming Stations

- The HAMILTON SAFE SMPC is a state of the art arming station that makes use of raised buttons that will allow you to easily depress a button without the accidental depression of a neighboring button.
 - Each depression of a number or word key will emit a *tactile* tone which is nothing more than a clicking sound to reassure you that the depression of that button has been recognized by the alarm system.
 - There are two basic styles of arming stations available:
 1. Arming stations that have back lighting which normally would be installed in areas that have dim or no light at certain time periods.
 2. Arming stations that have no back lighting.
 - You are able to control the illumination of the LCD by simultaneously depressing:
 1. The *BYPASS* and *ENTER* to brighten the arming station display.
 2. The *SCAN* and *MEMORY* to dim the arming station display.
-

Arming Station Maintenance

- From time to time there may become a need to clean your arming stations due to normal usage and/or environmental conditions. This cleaning process may be accomplished simply with a damp cloth or with a damp cloth with a mild cleaning solution.
- There is no need to worry about the lettering being removed during cleaning as the letters and numbers are actually molded into the rubber and cannot be harmed.

Away Arming / Disarming

Will I have an exit delay?	Can I cancel the exit delay?	Will I have an entry delay?	Are all Perimeter zones active?	Are all Interior zones active?	Can I remain on the premises?
Yes	No	Always	Yes	Yes	No

- This method of arming / disarming will also be used if your alarm system has been programmed for a *Partitioned System*, check with your alarm company to determine if this option has been enabled for use with your alarm system (also see page 14).
- Away Arming should be used when all personnel will be leaving the premises and all protection devices(s) will be active.

Arming Operation:

1. Press *AWAY* and enter your **PIN**.
2. Your arming station will display: AWAY ARMING
EXIT IN xx SECS
3. Exit premises.

Disarming Operation:

1. Enter the premises.
2. Your arming station(s) will be emitting steady warning tone.
3. Enter your **PIN**.
4. Your arming station will display: ENTER COMMAND
5. Press *CLEAR* to return to normal operating mode.

Away Disarming With Alarms

How will I know if an alarm has taken place?	Will the keypad display tell me if there was an alarm?	Should I enter the premises when I hear the audible alarm memory tone?
The keypad will be emitting a pulsing tone on entry (Audible Alarm Memory).	Yes, after disarming the keypad will display "XX Alarms In Memory"	You need to determine if it safe to do so, check with your alarm company for their recommendations.

Operation:

1. Your arming station will be emitting a pulsating tone in place of the steady tone.
2. Enter your **PIN** to disarm the system and silence the tone.
3. Your arming station will display: XX ALARMS
OCCURRED SCAN
4. Press *SCAN* continuously to observe all alarmed zones.
5. Press *CLEAR* to return to normal operating mode.

Note: {XX = number of alarm activation's}

Away Arming / Disarming + Partitioning

Stay Arming / Disarming

Will I have an exit delay?	Can I cancel the exit delay?	Will I have an entry delay?	Are all Perimeter zones active?	Are all Interior zones active?	Can I remain on the premises?
Yes	No	Always	Yes	No	Yes

- This method of arming / disarming will also be used if your alarm system has been programmed for a *Partitioned System*, check with your alarm company to determine if this option has been enabled for use with your alarm system (also see page 14).
- Stay Arming should be used when personnel will be remaining on the premises and requires access from area to area without activating an alarm condition.
- Certain zones may be inactive when the alarm system has been armed in this mode. Contact your alarm company for further information.

Arming Operation:

1. Press *STAY* and enter your **PIN**.
2. Your arming station will display:
3. Exit or stay on premises.

**STAY ARMING
EXIT IN xx SECS**

Disarming Operation:

1. Your arming station(s) will be emitting steady warning tone if you enter premises.
2. Enter your **PIN**.
3. Your arming station will display:
4. Press *CLEAR* to return to normal operating mode.

ENTER COMMAND

Stay Disarming With Alarms

How will I know if an alarm has taken place?	Will the keypad display tell me if there was an alarm?	Should I enter the premises when I hear the audible alarm memory tone?
The keypad will be emitting a pulsing tone on entry (Audible Alarm Memory).	Yes, after disarming the keypad will display "XX Alarms In Memory"	You need to determine if it safe to do so, check with your alarm company for their recommendations.

Operation:

1. Your arming station will be emitting a pulsating tone in place of the steady tone.
2. Enter your **PIN** to disarm the system and silence the tone.
3. Your arming station will display:
4. Press *SCAN* continuously to observe all alarmed zones.
5. Press *CLEAR* to return to normal operating mode.

**XX ALARMS
OCCURRED SCAN**

Note: {XX = number of alarm activation's}

Instant Arming / Disarming

Will I have an exit delay?	Can I cancel the exit delay?	Will I have an entry delay?	Are all Perimeter zones active?	Are all Interior zones active?	Can I remain on the premises?
Yes	Yes	No	Yes	No	Yes

- This method of arming / disarming will also be used if your alarm system has been programmed for a *Partitioned System*. check with your alarm company to determine if this option has been enabled for use with your alarm system (also see page 14).
- Instant Arming should be used when personnel will be remaining on the premises and requires access from protected area to protected area without activating an alarm condition.
- Certain zones may be inactive when the alarm system has been armed in this mode. Contact your alarm company for further information.

Arming Operation:

1. Press *INSTANT* and enter your **PIN**.
2. Your arming station will display: _____
3. Press *INSTANT* once more to cancel exit delay.

INSTANT ARMING
EXIT IN xx SECS

Disarming Operation:

1. Enter your **PIN**.
2. Your arming station will display: _____
3. Press *CLEAR* to return to normal operating mode.

ENTER COMMAND

Instant Disarming With Alarms

Will the keypad display tell me if there was an alarm activation?	Should I stay on the premises?
Yes, after disarming the keypad will display "XX Alarms In Memory".	You need to determine if it safe to do so, check with your alarm company for their recommendations.

Operation:

1. Enter your **PIN** to disarm the system.
2. Your arming station will display: _____
3. Press *SCAN* continuously to observe all alarmed zones.
4. Press *CLEAR* to return to normal operating mode.

XX ALARMS
OCCURRED SCAN


Note: {XX = number of alarm activation's}

Away Groups Arming / Disarming

Will I have an exit delay?	Can I cancel the exit delay?	Will I have an entry delay?	Are all Perimeter zones active?	Are all Interior zones active?	Can I remain on the premises?
Yes	No	Always	Yes	Yes	No


- Away Group Arming should be used when all personnel are leaving the premises and all protection devices(s) will be active.

Arming Operation:

- Press *AWAY* and enter your PIN.
- The arming station will be scrolling the groups available for you to arm.
- Press *AWAY* to arm all groups.
- or
- Select the group number(s) and press *AWAY*
- Your arming station will display: 
- Exit premises.

**AWAY ARMING
EXIT IN xx SECS**

Disarm Operation


- Enter premises.
- Arming station(s) will be emitting steady warning tone.
- Enter your PIN.
- Your arming station will display: 
- Press *CLEAR* to disarm all groups.
- or
- Select the group number(s) you wish to disarm and press *CLEAR*.

DISARM?

Away Group Disarming With Alarms

How will I know if an alarm has taken place?	Will the keypad display tell me if there was an alarm?	Should I enter the premises when I hear the audible alarm memory tone?
The keypad will be emitting a pulsing tone on entry (Audible Alarm Memory).	Yes, after disarming the keypad will display "XX Alarms In Memory"	You need to determine if it safe to do so, check with your alarm company for their recommendations.

Operation:

- Your arming station will be emitting a pulsating tone in place of the steady tone.
- Enter your PIN to disarm the system and silence the tone.
- Your arming station will display: 
- Press *SCAN* continuously to observe all alarmed zones.
- Press *CLEAR* to return to normal operating mode.

**XX ALARMS
OCCURRED SCAN**

Note: {XX = number of alarm activation's}

Stay Group Arming / Disarming

Will I have an exit delay?	Can I cancel the exit delay?	Will I have an entry delay?	Are all Perimeter zones active?	Are all Interior zones active?	Can I remain on the premises?
Yes	No	Always	Yes	No	Yes

- Stay Group Arming should be used when personnel will be remaining on the premises and requires access from area to area without activating an alarm condition.
- Certain zones may be inactive when the alarm system has been armed in this mode. Contact your alarm company for further information.

Operation:

1. Press *STAY* and enter your **PIN**.
2. The arming station will be scrolling the groups available for you to arm.
3. Press *STAY* to arm all groups.
- or
4. Select the group number(s) and press *STAY*
5. Your arming station will display:
6. You may exit or stay on premises.

STAY ARMING
EXIT IN xx SECS

Disarm Operation

1. Enter premises.
2. Arming station(s) will be emitting steady warning tone.
3. Enter your **PIN**.
4. Your arming station will display:
5. Press *CLEAR* to disarm all groups.
- or
6. Select the group number(s) you wish to disarm and press *CLEAR*.

DISARM?

Stay Group Disarming With Alarms

How will I know if an alarm has taken place?	Will the keypad display tell me if there was an alarm?	Should I enter the premises when I hear the audible alarm memory tone?
The keypad will be emitting a pulsing tone on entry (Audible Alarm Memory).	Yes, after disarming the keypad will display "XX Alarms In Memory"	You need to determine if it safe to do so, check with your alarm company for their recommendations.

Operation:

1. Your arming station will be emitting a pulsating tone in place of the steady tone.
2. Enter your **PIN** to disarm the system and silence the tone.
3. Your arming station will display:
4. Press *SCAN* continuously to observe all alarmed zones.
5. Press *CLEAR* to return to normal operating mode.

XX ALARM
OCCURRED SCAN

Note: {XX = number of alarm activation's}

Instant Group Arming / Disarming

Will I have an exit delay?	Can I cancel the exit delay?	Will I have an entry delay?	Are all Perimeter zones active?	Are all Interior zones active?	Can I remain on the premises?
Yes	Yes	No	Yes	No	Yes

- Instant Group Arming should be used when personnel will be remaining on the premises and requires access from area to area without activating an alarm condition.
- Certain zones may be inactive when the alarm system has been armed in this mode. Contact your alarm company for further information.

Operation:

1. Press *INSTANT* and enter your **PIN**
2. The arming station will be scrolling the groups available for you to arm.
3. Press *INSTANT* to arm all groups.
- or
4. Select the group number(s) and press *INSTANT*.
5. Your arming station will display:
6. Exit premises or Press *INSTANT* once more to cancel exit delay time.

**INSTANT ARMING
EXIT IN XX SECS**

Disarm Operation

1. Enter your **PIN**.
2. Your arming station will display:
3. Press *CLEAR* to disarm all groups.
- or
4. Select the group number(s) you wish to disarm and press *CLEAR*.

DISARM?

Instant Group Disarming With Alarms

Will the keypad display tell me if there was an alarm activation?	Should I remain on the premises?
Yes, after disarming the keypad will display XX Alarms In Memory	You need to determine if it safe to do so, check with your alarm company for their recommendations.

Operation:

1. Enter your **PIN** to disarm the system.
2. Your arming station will display:
3. Press *SCAN* continuously to observe all alarmed zones.
4. Press *CLEAR* to return to normal operating mode.

**XX ALARMS
OCCURRED SCAN**

Note: {XX = number of alarm activation's}

Force Arming

Level 1-2 can Force arm.	Will I have an exit delay?	Can I cancel exit delay?	Will I have an entry delay?	Will all Perimeter zones be active?	Are all Interior zones active?
Away	Yes	No	Yes	Yes	Yes
Stay	Yes	No	Yes	Yes	No
Instant	Yes	Yes	No	Yes	No

- This method of operation is selectable by your installing company and you must check with them to determine if this option has been enabled for use with your alarm system.

Operation:

- Press either *AWAY*, *STAY* or *INSTANT* and enter your PIN.
- Your arming station will display: **XX ZONE IS OPEN**
- Press either *AWAY*, *STAY* or *INSTANT*.
- Your arming station will display: **FORCE ARM ?**
- Again press the arming mode you originally selected or press *CLEAR* to cancel this operation and exit the arming mode.

Aborting the Alarm

Can I abort a Burglary alarm?	Can I abort a 24 Hour zone?	Can I abort a Fire zone?	Can I abort a Restricted zone?	Can I abort an ATM zone	Can I abort a Day zone?	Can I abort a Duress alarm?	Can I abort an Emergency?
Yes	Yes	No	Yes	Yes	Yes	No	No

- Your alarm system will allow you to cancel(abort) the alarm transmission of a signal that was caused in error. Check with your alarm company to determine if this feature and the time window have been enabled for your use.

Operation:

- An alarm condition is activated.
- * Your arming station will display: **ZONE 01 IS IN ALARM**
- Enter your PIN.
- No message describing the abort will be displayed.
- Contact your alarm monitoring company.

* No alarm message will be displayed if Group arming is enabled.

Force Arming Aborting the Alarm

Zone Scanning

Can I scan all zones?	Which user authorization levels can scan zones?	Can I scan while the system is armed?
Without Group arming = Yes. With Group arming = only the zones assigned to your group(s).	All Levels	No

- The bottom line of your arming station may display "Secure Zones to ARM" or a similar message that may have been custom programmed by your installing company. Please check with your installing company for the correct message.

Operation:

- Press *SCAN*.
- Enter your *PIN*.
- Select 1 - *Zone Scan* option.
- Press *SCAN* (repeatedly) to view all zones statuses.
- Press *CLEAR* to return to normal operating mode.

Trouble Scanning

	AC Failure	Ground Fault	Low Battery	Telephone Trouble	Zone Trouble or Smoke Trouble
Tone Output?	Yes	Yes	Yes	Yes	Yes
Required Action	Enter PIN to silence tone	Enter PIN to silence tone	Enter PIN to silence tone	Enter PIN to silence tone	Enter PIN to silence tone
Probable Cause	Check circuit breaker. Call for service	Problem with a zone. Call for service	Standby battery has failed. Call for service	Alarm system not detecting phone lines. Call for service	Problem with detection circuit. Call for service

- Your alarm system is continuously performing a self diagnostics check to ensure proper operation of the following: **AC Failure - Ground Fault - Low Battery - Telephone Failure**
- Immediately contact your alarm company should any of these failure messages display on your arming station(s).

Operation:


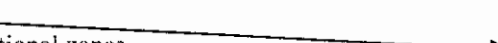
- Arming station will be emitting alert tone and display a trouble message.
- Observe and *note* trouble message.
- Enter your *PIN* to silence tone.

Zone Bypassing

What level can bypass zones?	Can I bypass any zone?	Can I bypass zones while the alarm system is armed?
Level 1, 2 or 3	No – Check with your alarm company	No

- Bypassing zones will allow you to arm your alarm system even through you may have protection devices that cannot be secured or you may have a need to arm your alarm system with the particular protection devices(s) not active for arming the period.

Operation:

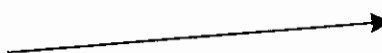
1. Press *BYPASS* and enter your PIN.
2. Your arming station will display: 
3. Enter 2 digit zone number and press *ENTER* (zone 1 - enter 01).
4. The arming station will display the zones status (open, normal, trouble).
5. Press *BYPASS* and *CLEAR*. 
6. Repeat steps 4 to 5 to bypass additional zones.
7. or press *CLEAR* to return to normal operating mode.

Sensor Reset

What level can perform a Sensor reset?	What will this command reset?	Does this command apply to my alarm system?
All levels	Smoke Detectors Fire Circuit Glass Break Detectors	Check with your alarm company

- This procedure will allow your alarm system to reset detectors that may have activated an alarm condition.
- Note the zone name of the device that may appear on the arming station display.
- This command *must* be performed after a smoke detector alarm activation to allow you to arm your alarm system

Operation:

1. Observe and note arming station display.
2. Press *RESET*.
3. Enter your PIN.
4. Your arming station will monetarily display: 

Zone Bypassing Sensor Reset

History Viewing

History Viewing

How many history buffers are in my system?	What is the total Size of the combined buffers?	Who can view these history buffers?	How long will these events be stored?	Can I get a printout of these history buffers?
2 All History Open Close History	512 events	Levels 1or 2	Until 512 events have been logged.	Yes - Additional hardware is required. Check with your alarm company.

- The History Buffer is a powerful aid that allows both you and your alarm company to maintain a log of all events that have occurred.
- In addition to arming and disarming information, the History Buffer maintains diagnostic information in regards to your alarm system such as power failures, when the alarm system was last programmed, etc.
- The history buffers will display the time and date the event occurred. There will also be an event number that will be displayed in the upper right hand portion of the display.
- The buffer will start to lose the oldest events (highest numbered events) once it has reached maximum capacity (512 events) while continuing to store the latest occurrences.

Immediate History Viewing

Who can view this history?	How long will the system retain this information?	Can I view this information elsewhere?
Any one who disarms the system.	It can be viewed only once after disarming.	Yes – In all history

- Immediate Alarm History Viewing will occur when an alarm condition has taken place while your alarm system had been armed in either of the three arming modes *AWAY*, *STAY* or *INSTANT*.

Operation:

1. Enter your **PIN** to disarm.
2. Your arming station will display:
3. Press *SCAN* and observe display:
4. Press *CLEAR* to return to normal operating mode.

Note: XX = number of alarm activation's that occurred.

**XX ALARM
OCCURRED SCAN**

**ALARM # 01
ZONE 1**

All History Viewing

Who can view this history buffer?	How long will the system retain this information?	What data is contained in this buffer?
Levels 1 or 2	Until the buffer is full and then the oldest events will automatically be deleted (first in first out).	All activities are stored in this buffer including Opening and Closing.

- This viewing mode would normally be used primarily by your alarm company to determine if there was an ongoing problem with your alarm system and therefore may not have been enabled for your viewing.
- Please consult your alarm company to determine if this option has been enabled for you.

Operation:

1. Press *MEMORY*.
2. Enter your *PIN*.
3. Press *1*.
4. Press *SCAN* (repeatedly) to observe all events in memory.
5. Press *CLEAR* to return to normal operating mode.

Note: Pressing *MEMORY* will move you in reverse order once you have accessed this history buffer.

Open/Close History Viewing

Who can view this history buffer?	How long will the system retain this information?	What data is contained in this buffer?	Will this buffer tell me who armed and disarmed and at what time?
Levels 1 or 2	Until the buffer is full and then the oldest events are deleted.	All activities concerning the arming and disarming of your alarm system.	Yes – the system will log the user number followed by a time/date stamp.

- This mode enables personnel to view who armed and disarmed the alarm system and when, and if programmed, which portions of the alarm system were armed or not armed.
- Please consult your alarm company to determine if this option has been enabled for you.

Operation:

1. Press *MEMORY*.
2. Enter your *PIN*.
3. Press *2*.
4. Press *SCAN* (repeatedly) to observe all events in memory.
5. Press *CLEAR* to return to normal operating mode.

Note: Pressing *MEMORY* will move you in reverse order once you have accessed this history buffer.

Viewing Partition Arm / Disarm Status

- You may view the status of other Partitions that are assigned to you from any *disarmed* arming station in your installation.

Operation:

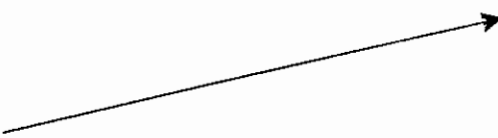
1. Enter your *PIN* and press *ENTER*.
2. Your arming station will display: (PARTITION NAME)
(system status) SCAN
3. Press *SCAN* to view the status of subsequent partitions.
4. Press *CLEAR* to return to normal operating mode.


Monitor Mode

Who can access this mode?	Burglary zones will activate:	ATM zones will activate:	Fire zones will activate:	24 Hour zones will activate:	Day zone will activate:	Restricted zones will activate:
Level 1, 2, 3 or PINs	Monitor Mode Only	Monitor Mode Only	Monitor Mode and An Alarm	Monitor Mode and An Alarm	Monitor Mode and An Alarm	Monitor Mode Only

- The *Monitor Mode* option will allow for the local annunciation of protection devices when your alarm system is in a disarmed condition.
- The arming station will emit an audible tone and display the name of the protection device (if so programmed by your installing company).

Operation:
 To Enter *Monitor Mode*:

1. Press *MONITOR*.
2. Enter your *PIN*.
3. Your arming station will display: 

To Exit *Monitor Mode*:
 Enter your *PIN*.
 Your arming station will display: 
 Press *CLEAR* to return to normal operating mode.

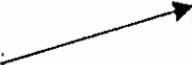
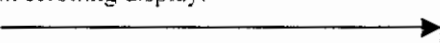
Note: your alarm system may have been programmed for no PIN required to enter the Monitor Mode.

Walk Test

Who can access this mode?	Burglary zones will activate:	ATM zones will activate:	Fire zones will activate:	24 Hour zones will activate:	Day zones will activate:	Restricted zones will activate:
Level 1, 2, 3 or PINs	Walk test mode only	Walk test mode only	Walk test and an alarm	Walk test and an alarm	Walk test and an alarm	Walk test mode only

- The *Walk Test* function is used to test the integrity of the devices connected to your alarm system.

Operation:

1. Press *WALK* and enter your *PIN*.
2. The arming station will be scrolling all protection device names: 
3. Test all protection devices.
4. Tested device name will be removed from scrolling display.
5. At completion of test observe message: 
6. Press *CLEAR* to return to normal operating mode.

System Programming

- A great deal of thought was applied to the design of your alarm system with you (the user of the system) as our main concern. Hamilton Safe has gone to great lengths to include all of the necessary information into this documentation in an easy to use format.
- We highly recommend that if there are areas in the programming of the alarm system that you may not fully understand, please ask for assistance with a qualified alarm technician until you have a complete understanding of all the options available to you and their functions.
- With each programming operation described in this manual, we assume that you are not inside the programming portion of the alarm system and therefore each operation indicates that you must press PROGRAM and then enter your user number one PIN. If you are already in the program mode you may easily move from one program option to the other without the need to exit the program mode and re-enter the programming mode.

Accessing Programming Mode

Operation:

1. Press *PROGRAM*.
2. Enter your **PIN**
3. Observe display:
4. The top line of the arming station display will change to "User Program" and the bottom line will be scrolling your programming options listed below:

USER PROGRAM
(Scrolling 1-7)

1. PIN Program
2. Set Clock
3. Schedules
4. Extend Close
5. Duress
6. Auto Monitor
7. Holiday

Programming Tips:

- Please note that each of the above listed programming option has a number assigned to it.
- Press the number that corresponds to the programming option you wish to enter.
- The programming option will then display the required data to be entered to enable or disable the selected option.
- Every entry or change you make to the alarm system will pulsate and the ENTER key must be pressed after you have made your change to lock the selection into the system.
- Press CLEAR (repeatedly) to exit the programming mode once you have completed your changes.

1. PINS

- Personnel Identification Numbers (PINS) are access codes that will allow you and/or your employees to control your alarm system.
- You may enter any four or six number digit that you wish for any user.
- Deleting PINS is accomplished by press *RESET* and then *ENTER* when the PIN is displayed.
- User number one PIN level cannot be changed and *must* remain a level one.

Functions	Level 1	Level 2	Level 3	Level 4	Level 5
Arm System	•	•	•	•	•
Arm Restriction	•	•	•	•	•
Disarm	•	•	•	•	•
Disarm Restriction	•	•	•		
Bypass Zones	•	•	•		
Force Arm	•	•			
PIN Programming	•	•			
Sensor Reset	•	•	•	•	•
Trouble Scan	•	•	•	•	•
User Programming	•	•			
Zone Status Scan	•	•	•	•	•

System Features	Level 1	Level 2	Level 3	Level 4	Level 5
Extend Closing Time	•	•			
Monitor Mode	•	•	•	•	
Schedules	•				
Time Date	•	•			
Walk Test Mode	•	•	•	•	
View History Buffers	•	•			

Operation:

Press number one (1) button (PIN program).
 Press *SCAN* repeatedly until the desired PIN is on the display.
 Observe Display:
 Enter PIN level + PIN (new PIN will pulsate).
 Press *ENTER*.
 Press *SCAN* to enter next PIN – Repeat steps 2 -- 5
 Press *CLEAR* to exit this program mode.

USER PIN #01
1 1234

USER PIN #01
1 4321 (pulsating)

Or use the following method if only a few PINS need to be added.

1. Enter your PIN (level 1 only).
2. Press *PROGRAM*.
3. Press 1 (PIN Program menu).
4. Press *PROGRAM*.
5. Observe display:
6. Select user number 01 – 99.
7. Press *ENTER* followed by *CLEAR*.
8. Enter PIN level – PIN (new PIN will pulsate).
9. Press *ENTER*.
10. Repeat steps 5 – 9.
11. Press *CLEAR* to return to *USER PROGRAM*.

“SET USER NUMBER”

USER PIN #01
1 4321 (pulsating)

2. Time / Date

Who can set Time / Date?	The keypad emits a tone when I access this part of Program.	This function works in conjunction with?	Will events correctly log into my history buffers if Time / Date is not set?	Can I view the day of the week?
Level 1-2	Your alarm company did not enable this option for you.	Auto Arm – Schedules – History Buffers	No – They will appear as ??? for Date and ?? for Time.	Press the <i>ENTER</i> key when the alarm system is in the normal operating mode.

- The time clock function is an integral part of your alarm system due to the fact many of the options available in your alarm system are timing related.

Operation:

- Press *PROGRAM*.
- Enter a level 1 or 2 PIN.
- Press 2 (time / date).
- Press 1 for date.
- Enter the date in a two digit format (your entry will pulsate).
- Press *ENTER* and then *CLEAR*.
- Press 2 for time.
- Enter time and select AM or PM. (your entry will pulsate).
- Press *ENTER* and *CLEAR*.

SET CLOCK

DATE
00/00/00

TIME OF DAY
12:00 AM 1=PM

3. Schedules

Who can set Schedules?	What are Schedules?	The keypad emits a tone when I access this part of the program.
Level 1-2	The Schedules will determine the functionality of the Auto Arm and Open & Close Report Codes Suppression features.	Your alarm company did not turn this on for you to program.

Operation:

- Under the Schedule option there are four sub menus that are selected by pressing the number that corresponds to the option.

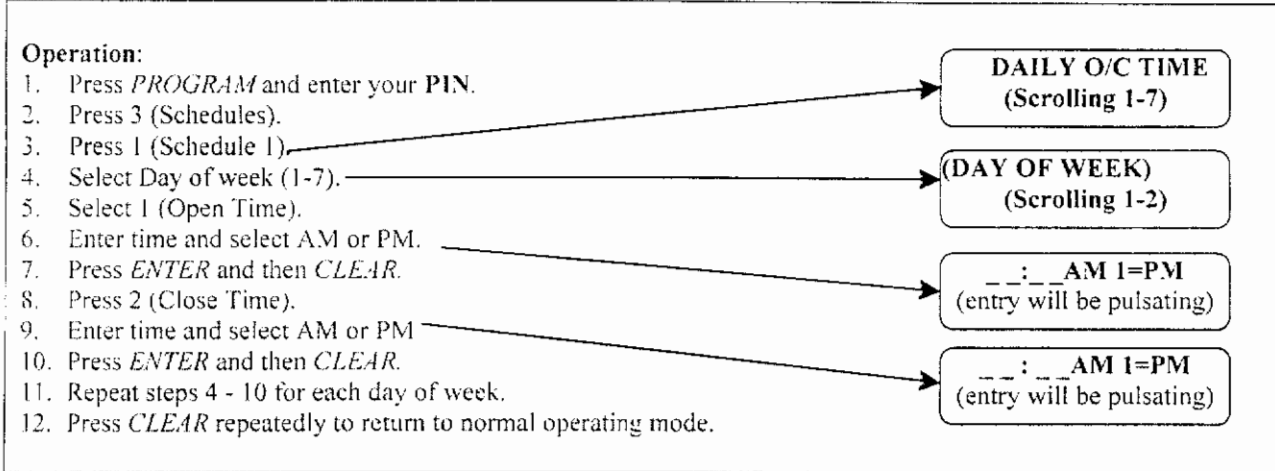
The sub-menus are:

- Schedule 1.
- Schedule 2.
- Temporary Schedule 1.
- Temporary Schedule 2.
- Holidays

SELECT SCHEDULE
(scrolling 1-5)

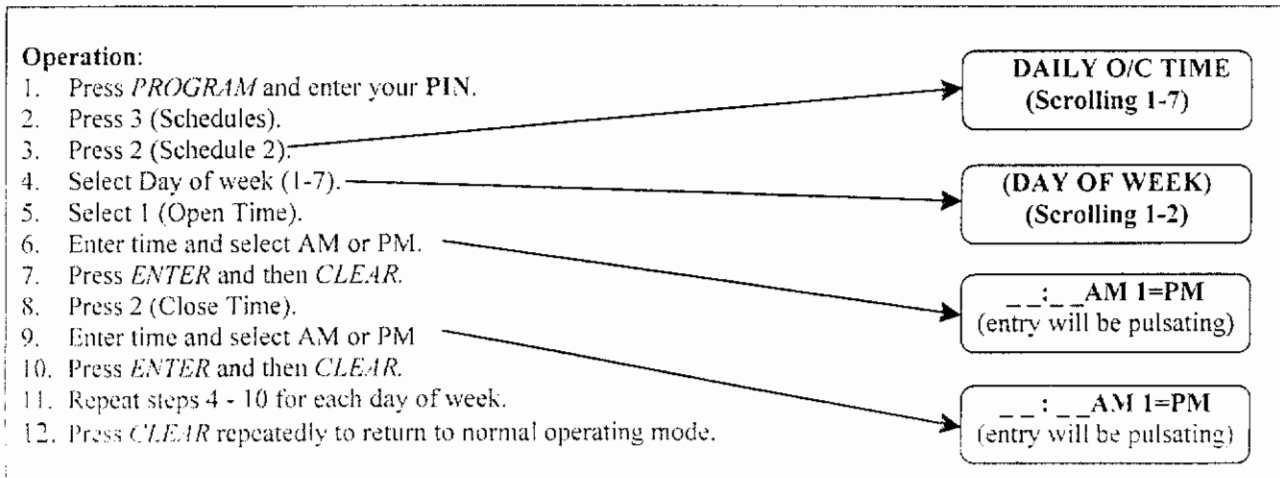
3. Schedules

Schedule 1



Schedule 2

- Schedule Two is not used for Auto Arming.



3. Schedules

Temporary Schedule 1

Operation:

1. Press *PROGRAM* and enter your **PIN**.
2. Press 3 (Schedules).
3. Press 3 (Temp Sch 1).
4. Press 1 (Date).
5. Enter date (pulsating).
6. Press *ENTER* and then *CLEAR*.
7. Press 2 (Open Start).
8. Enter time.
9. Press *ENTER* and then *CLEAR*.
10. Press 3 (Close Start).
11. Enter time.
12. Press *ENTER* and then *CLEAR*.

TEMP SCH 1
(Scrolling 1-3)

1 SELECT DATE
_ _ / _ _ / _ _

1. OPEN START
_ _ : _ _ AM 1=PM

2. CLOSE START
_ _ : _ _ AM 1=PM

Temporary Schedule 2

Operation:

1. Follow the same programming procedure as described for Temp Schedule 1 except for entering menu 4.

Holidays

- This option will allow you to program Holidays in advance.

Operation

1. Press *PROGRAM* and enter your **PIN**.
2. Press 3 (Schedules).
3. Press 5 (Holidays)
4. Press 1 (Add Holidays)
5. Press 1 (Days)
6. Enter date and press *ENTER* and *CLEAR*.
7. Press 2 (Number of Days).
8. Select number of days the holiday will last and then press *ENTER* and *CLEAR*.

HOLIDAYS
(Scrolling 1-3)

ADD HOLIDAYS
(Scrolling 1 -2)

DATE
00/00/00

NUMBER OF DAYS
00

Follow steps 1 – 8 for Delete Holidays.

Note: View Holidays is not a programming option

4. Extend Close Time

Who can extend the Close time?	The keypad emits a tone when I access this part of program.	Does this feature work with Restriction/Auto Arm?	Can I extend the Close Time more than once?
Level 1-2	Your alarm company did not enable this option for you.	Yes	Yes, multiple times as long as the close time does not exceed mid-night.

- You may extend the Close time in 10 minute increments (up to 99x 10 minutes) when the time arrives for your alarm system to perform an Auto Arm and/or the Restricted zones or groups.

Operation:

- Press *PROGRAM* and enter your PIN.
- Press 4 (Extend Close).
- Enter 2 digit value (your entry will be pulsate).
- Press *ENTER* and then *CLEAR*.
- Press *CLEAR* repeatedly to return to normal operating mode.

1 EXTEND CLOSE
00 X 10 mins.

5. Duress PIN

Who can program Duress PINs?	The keypad emits a tone when I access this part of program.	Will this PIN arm my alarm system?	Will this PIN disarm my alarm system?	Can I bypass zones with this PIN?	Can I have a six digit Duress PIN?
Level 1-2	Your alarm company did not enable this option for you.	Yes	Yes	Yes	No

- Duress **PIN** is a disarming code that may be used to alert your central station that an individual is forcing you to disarm your alarm system.
- No message indicating this **PIN** was used will display on the keypad. A silent signal will be sent to your monitoring company.

Operation:

- Press *PROGRAM* and enter your PIN.
- Press 5 (Duress PIN).
- Enter your 4 digit selection.
- Press *ENTER* and then *CLEAR*.
- Press *CLEAR* repeatedly to return to normal operating mode.

DURESS PIN
XXXX

6. Auto Monitor

Do I need to enter my code to turn on this feature?	Do I need to enter my code to turn off this feature?	Will this feature work if there was an alarm activation while the alarm system was armed?
Check with your alarm company.	You cannot turn this mode off by entering your PIN.	No, the alarm system will display "XX ALARMS OCCURRED"

Operation:

1. Press *PROGRAM* and enter your **PIN**.
2. Press 6 (Auto Monitor).
3. Press 0 if NO - 1 if YES.
4. Press *ENTER* and then *CLEAR*.
5. Press *CLEAR* repeatedly to return to normal operating mode.

AUTO MONITOR
NO 0=NO 1=YES

7. Holiday

Who can program Holidays?	The keypad emits a tone when I access this part of program.	Who can program holidays?	How many holidays can I program.	Do I need to remember dele to these holidays days?
Level 1-2	Your alarm company did not enable this option for you.	Level 1-2	One	No - it will be done automatically

Holiday Tomorrow

- Program this option if Tomorrow will be a holiday and the premises will not be disarmed.

Operation:

1. Press *PROGRAM* and enter your **PIN**.
2. Press 7 (Select Holiday).
3. Press 1 (Holiday Tomorrow).
4. Press 0 if NO - 1 if YES.
5. Press *ENTER* and then *CLEAR*.
6. Press clear repeatedly to return to normal operation.

SELECT HOLIDAY
(Scrolling 1-2)

HOL-TOMORROW
NO 0=NO 1=YES

Holiday is Next Monday

- Program this option if the following Monday will be a holiday and the premises will not be disarmed.
- Consult your alarm company to determine if this option has been enabled.

Operation:

Program in the same manner as Holiday Tomorrow.

Description of Arming Station Displays (alphabetical listing)

**AC Failure
(BLANK)**
With keypad
warning tone

This indication is to alert you that there is a fault condition with the AC power to your alarm system. Enter your PIN to silence this tone and immediately contact your alarm company for service

**Armed Away
(BLANK)**

The arming station will display the selected arming mode after your alarm system has fully armed.

**Armed Instant
(BLANK)**

The arming station will display the selected arming mode after your alarm system has fully armed.

**Armed Stay
(BLANK)**

The arming station will display the selected arming mode after your alarm system has fully armed.

**Away Exit Delay
Exit in XX Secs**

A valid PIN has been used in conjunction with the AWAY button to arm your alarm system.

**Aux Power Fault
(BLANK)**
With keypad
warning tone

This indication is to alert you that there is an internal fault condition with the power source from your alarm system to your electrical protection devices. Enter your PIN to silence this tone and immediately contact your alarm company for service.

**Bell Fault
(BLANK)**
With keypad
warning tone

This indication is to alert you that there is an internal fault condition with the audible devices connected to your alarm system Enter your PIN to silence this tone and immediately contact your alarm company for service.

**Comm Failure
(BLANK)**
With keypad
warning tone

This indication is to alert you that the built in communicator has attempted to transmit a report signal to your central station but was unsuccessful. Enter your PIN to silence this tone and immediately contact your alarm company for service.

**Enter Command
(scrolling)**

The "Enter Command" allows you to perform another function or command without the need to re-enter your PIN. You may press CLEAR to return to the normal operating mode.

Description of Arming Station Displays

Description of Arming Station Displays

**Exp. Bus Fault
(BLANK)**

With keypad
warning tone

This indication is to alert you that there is a fault condition with one or more of your expander boards. Enter your PIN to silence this tone and immediately contact your alarm company for service.

**Ground Fault
(BLANK)**

With keypad
warning tone

This indication is to alert you that there is a fault condition with the earth ground protection circuitry. Enter your PIN to silence this tone and immediately contact your alarm company for service.

**Instant Exit Delay
Exit in XX Secs**

A valid PIN has been used in conjunction with the INSTANT button to arm your alarm system.

**Low Battery
(BLANK)**

With keypad
warning tone

This indication is to alert you that there is a fault condition with your standby battery. Enter your PIN to silence this tone and immediately contact your alarm company for service.

**Set Clock
Zones Normal**

Should this message ever appear pulsating on your arming station you will have to either reprogram the current time and date into your alarm system or contact your alarm company if the system will not accept your entry to this programming field. The time and date will have to be re-entered if there was a complete loss of AC and the stand by battery has failed.

**Smoke Fire Alarm
(BLANK)**

This message will appear on your arming station when there has been an alarm activation on your smoke detector circuit and may be accompanied with an audible tone from your arming station. Enter your PIN and press RESET to reset your smoke detector circuit.

**Smoke Trouble
(BLANK)**

With keypad
warning tone

This indication is to alert you that there is a fault condition with one of your smoke detectors. Enter your PIN to silence this tone and contact your alarm company for service.

**Stay Exit Delay
Exit in XX Secs**

A valid PIN has been used in conjunction with the STAY button to arm your alarm system.

**System Armed
1 2 3 4 5 6 7 8**

The arming station will display this message after the exit period has expired and if the panel has been divided into particular areas. Please consult your alarm company to determine if this option has been enabled. A number pulsating in the arming station display is an indication the area has been armed in stay or instant mode.

<p>System Ready Zones Normal</p>	<p>Your alarm system is capable of displaying this message, the time and date or any custom message on the top line of the display. Consult your alarm company for the correct message.</p>
<p>System Ready Secure to Arm</p>	<p>The "Secure to Arm" message indicates there are zones that need to be secured before your alarm system will allow your arm. This message may have customized by your alarm company.</p>
<p>System Ready Zones Bypassed</p>	<p>The "Zones Bypassed message indicates there are one or more zones have been bypassed and are temporally unable to activate an alarm condition.</p>
<p>Tel 1 Failure (BLANK)</p>	<p>This display will be accompanied with an arming station audible tone. This indication is to alert you that there is a fault condition with your telephone line. Enter your PIN to silence this tone and contact your alarm company for service.</p>
<p>Tel 2 Failure (BLANK)</p>	<p>This display will be accompanied with an arming station audible tone. This indication is to alert you that there is a fault condition with your second telephone line. Enter your PIN to silence this tone and immediately contact your alarm company for service.</p>
<p>(Time \ Date) Zones Normal</p>	<p>Your alarm system has the option to display the current time and date in place of the prompt "System Ready". The bottom portion of the display, "Zones Normal" is informing you that all protection devices are secure and the system is ready to accept a command.</p>
<p>Zone XX is in Alarm</p>	<p>An alarm has been activated on a protection device. Enter your Pin to silence any audible device and press Reset.</p>
<p>Zone XX is in Trouble</p>	<p>This display will be accompanied with an arming station audible tone. This indication is to alert you that there is a fault condition with one or more of your protected zones. Enter your PIN to silence this tone and immediately contact your alarm company for service.</p>
<p>Contact your alarm company should your arming station display a message that is not included in the above listed messages.</p>	

Description of Arming Station Displays

Appendix A

To reset Smoke Detector, enter four or six PIN digit & *RESET* key.
 SMOKE DETECTOR PLACEMENT - Reprinted from NFPA Standard 74

A-2 Smoke Detection.

A-2.1 Where to Locate the Required Smoke Detectors.

A-2.1.1

The major threat from fire in a family living unit is at night when everyone is asleep. The principal threat to persons in sleeping areas comes from fires in the remainder of the unit; therefore, smoke detector(s) are best located between the bedroom areas and the rest of the unit. In units with only one bedroom area on one floor, the smoke detector should be located as shown in

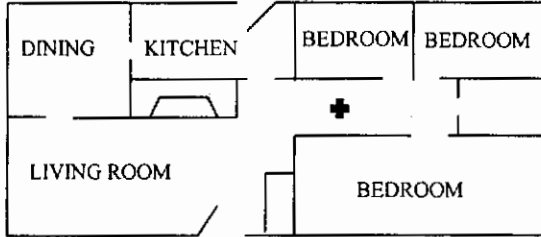


Figure A-2.1.1 A smoke detector (indicated by cross) should be located between the sleeping area and the rest of the family living unit.

A-2.1.2 In family living units with more than one bedroom area or with bedrooms on more than one floor, more than one smoke detector will be needed, as shown in

Figure A-2.1.2

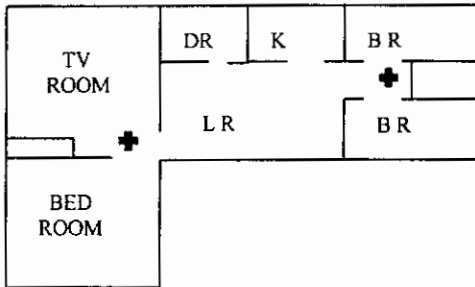


Figure A-2.1.2 In family living units with more than one sleeping area, a smoke detector (indicated by cross) should be provided to protect each.

A-2.1.3 In addition to smoke detectors outside of the sleeping areas, this standard requires the installation of a smoke detector on each additional story of the family living unit, including the basement. These installations are shown in Figure A-2.1.3. The living area smoke detector should be installed in the living room and/or near the stairway to the upper level. The basement smoke detector should be installed in close proximity to the stairway leading to the floor above. If installed on an open-jointed ceiling, the detector should be placed on the bottom of the joists. The detector should be positioned relative to the stairway so as to intercept smoke coming from a fire in the basement before the smoke enters the stairway.

Appendix A (continued)

A-2.2 Are More Smoke Detectors Desirable? The location of the required smoke detectors does not provide adequate protection for the occupants from a fire starting within their bedrooms, nor do the required smoke detectors provide reliable early warning protection for those areas separated by a door from the areas protected by the required smoke detectors. For these reasons, it is recommended that the householder consider the use of additional smoke detectors for those areas for increased protection. The additional areas include: basement, bedrooms, dining room, furnace room, utility room, and hallways not protected by required smoke detectors. The installation of smoke detectors in kitchens, attics (finished or unfinished), or in garages is not normally recommended as these locations occasionally experience conditions which may result in improper operation.

A-2.3 Smoke Detector Mounting - "Dead" Air Space.

A-2.3.1 The smoke from a fire generally rises to the ceiling, spreads out across the ceiling surface and begin to bank down from the ceiling. The corner where the ceiling and wall meet is an air space into which the smoke may have difficulty penetrating. In most fires, this "dead" air space measures about 4 in. (0.1m) along the ceiling from the corner and about 4 in. (0.1m) down the wall as shown in Figure A-3.2.1. Detectors should not be placed in this "dead" air space.

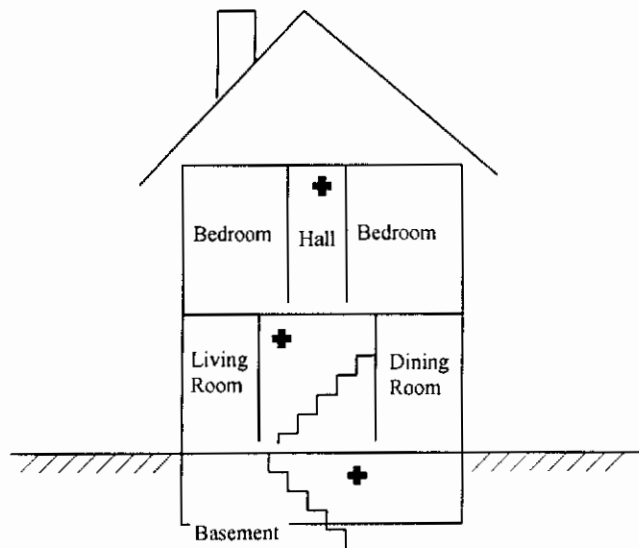
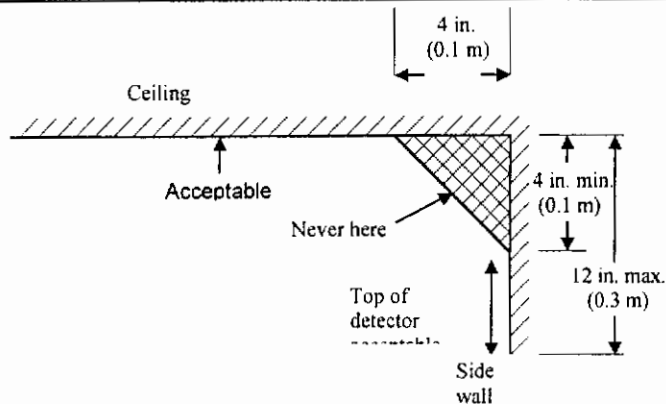


Figure A-2.1.3 A smoke detector (indicated by cross) should be located on each story.



NOTE:
Measurements shown are
to the closest edge of the
detector.

Figure A-3.2.1 Example of proper mounting for detectors.