

Networked Video Recorders Provide Security for the Spokane Convention Center

The Challenge

In 2005, the Spokane Public Facilities District (SPFD) started construction on a new convention center for the City of Spokane. The state-of-the-art facility was designed to attract larger organizations to Spokane as a convention destination. The new Spokane Convention Center was to be physically connected to Spokane's existing convention center, and the nearby Performing Arts Center.

Allied Fire & Security was brought in during the early stages of construction to make recommendations on video surveillance enhancements at the new facility. Some of the challenges that Allied faced in making these recommendations were:

- The size of the 164,307 square-foot new facility.
- Eventually, the SPFD wanted to incorporate three additional large facilities that they manage into a single integrated security solution. These three additional facilities include:
 - The Spokane Veteran's Memorial Arena, a 12,638-seat multi-purpose arena mainly used for concerts, ice hockey, arena football and basketball games.
 - The INB Performing Arts Center



ABOVE: The newly-constructed Spokane Convention Center features 13 surveillance cameras and six, multi-channel DVRs. Photo courtesy of SPFD.

- The existing convention center
- The central security station would have to be relocated several times as SPFD completed renovation projects in the other three facilities.
- All three facilities were physically separated from the new Convention Center by up to a mile.

The Solution

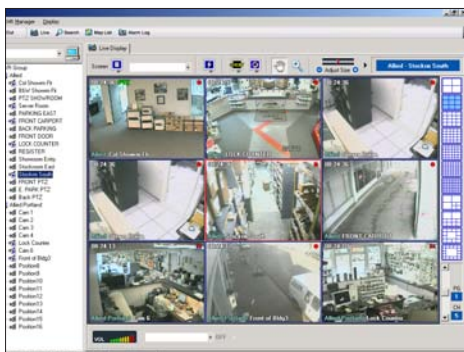
After evaluating these challenges, Allied recommended a system that was based on hardware and software manufactured by PC Open, an industry-leading manufacturer of video surveillance equipment that is headquartered locally in Spokane. The design was centered around PC Open's OpenEye brand of digital video recorders (DVRs) and Radius brand of multi-site security manage-

ment software.

"[The Open Eye-Radius system] is user friendly, offers more flexibility, and I can search for incidents in three separate buildings all from the Arena," SPFD Security Lt., Mark Miller, said.

Due to the size of the new facility, it was not practical to run video cables from each camera back to a central location for viewing and storage. Additionally, Allied was concerned that if a centralized system was installed, a major system malfunction in the head-end equipment could potentially affect SPFD's ability to monitor security in all three buildings. A distributed networked system would be much better-able to maintain operations should any failures occur.

Allied's design incorporated multiple OpenEye DVRs installed in strategic locations throughout the facility. Video cameras were installed and routed back to the nearest DVR which were all connected to SPFD's robust TCP/IP data network. Using



ABOVE: The security staff at the Spokane Convention Center can monitor multiple video cameras at once from any workstation connected to their network with a screen like this.

"I can search for incidents in three separate buildings all from the Arena."

— SPFD Security Lt., Mark Miller

